

İDEA

ALUMINUM SYSTEMS
BIOCLIMATIC PERGOLA
MOTORIZED PERGOLA
GUILLOTINE GLASS

www.ideatente.com



İDEA Alüminyum Sistemleri olarak Antalya'da 4500 m² kapalı alan üzerine kurulu fabrikamızda profesyonel olarak Bioklimatik Pergola, Motorlu Pergola, Giyotin Cam Sistemleri, Sürme cam Sistemleri ve Kış bahçesi Sistemleri imalatı yapmaktayız.

İDEA Tente Alüminyum Sistemleri kurulduğu günden beri yapmış olduğu AR-GE çalışmaları ve bilgi birikimiyle, ürettiğimiz ürünleri tamamen kendi bünyemizde tasarladık. Sistemlerimizde kullandığımız tüm profil ve aksesuarlar kendi tasarımlarımız olup, bu ürünlerin kalıp, patent ve tüm hakları şirketimize aittir. Ürünlerimiz Avrupa standartlarına uygun olarak tasarlanmıştır ve malzeme hammaddeleri bu standartlara uygun olarak kullanılmaktadır. Sektörde uzun yıllardır tecrübeli ekibi ile hizmet veren şirketimiz, AR-GE çalışmalarını devamlı olarak sürdürerek, gelişmekte ve yenilenmektedir. Mimari departmanımız kusursuz imalat ve montaj için her projede ölçülendirme aşamasından montaj bitimine kadar titizlikle kontrol çalışmaları yapar. Tüm Türkiye'de Demonte ve montajlı olarak hizmet veren firmamız, aynı zamanda Dünya'da bir çok ülkeye Bioklimatik pergola, Motorlu Pergola ve Giyotin cam, Sürme Cam ve kış Bahçesi sistemlerini üreterek ihracat yapmaktadır. Şirketimizin ihracat rakamları her geçen sene artarak devam etmektedir. Tasarım ve imalatta kalite, güvenlik, sağlamlık, konfor ve şık görünüme önem veren şirketimiz her zaman müşteri memnuniyetini ve satış sonrası hizmeti önemser. Söz verilen zamanda teslim, üstün kalite, profesyonel imalat ve montaj anlayışıyla her zaman hizmetinizdeyiz.

As İDEA Aluminum Systems, we manufacture professionally Bioclimatic Pergola, Motorized Pergola, Guillotine Glass Systems, Sliding Glass Systems and Winter Garden Systems in our factory built on a closed area of 4500 m² in Antalya.

With the R&D studies and knowledge that İDEA Tente Aluminum Systems has done since its establishment, we have designed the products we produce entirely within our own structure. All the profiles and accessories we use in our systems are our own designs, molds, patents and all rights of these products belong to our company. Our products are designed in accordance with European standards and material raw materials are used in accordance with these standards. Our company, which has been serving in the sector for many years with its experienced team, is constantly developing and renewing its R&D studies. Our architectural department performs meticulous control studies from the dimensioning stage to the end of assembly in every project for perfect manufacturing and assembly. Our company, which provides service as disassembled and assembled all over Turkey, also exports to many countries in the world by producing Bioclimatic pergola, Motorized Pergola and Guillotine glass, Sliding Glass and Winter Garden systems. The export figures of our company continue to increase every year. Our company, which attaches importance to quality, safety, durability, comfort and stylish appearance in design and manufacturing, always cares about customer satisfaction and after-sales service. We are always at your service with the understanding of delivery on time, superior quality, professional production and assembly.



BİOKLİMATİK PERGOLA SİSTEM

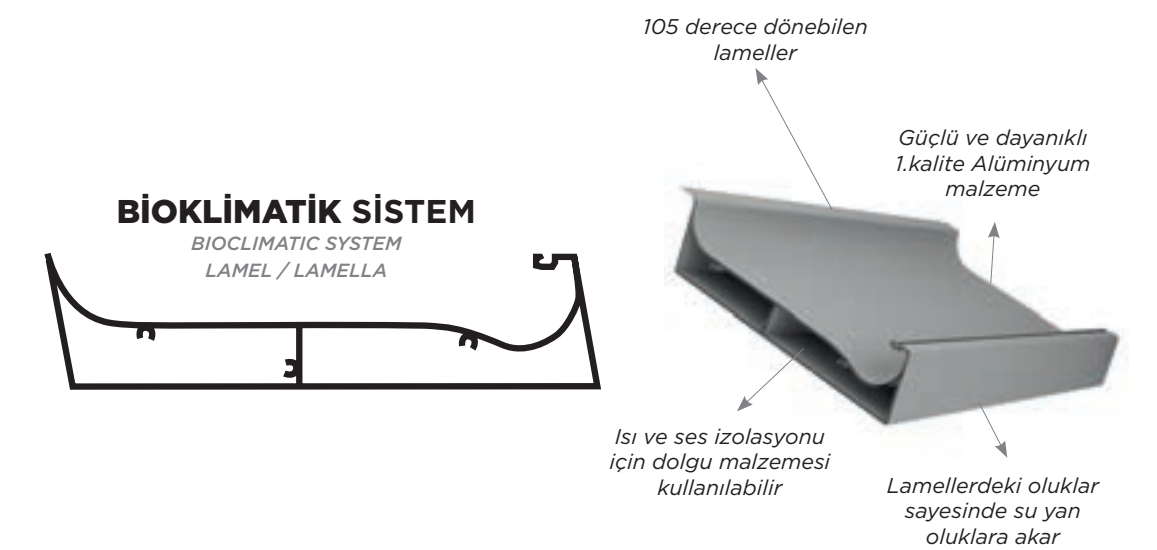
BIOCLIMATIC PERGOLA SYSTEM

Bioklimatik otomatik açılır kapanır tavan sistemleri tüm mekanlara uyumlu şekilde tasarlanmıştır.

Sessiz çalışma, ısı ve ses yalıtımı imkanı, %100 su geçirmezlik oranı ile, teraslarınızda,cafe restoranlarınızda, kış bahçelerinizde, hatta ve hatta müstakil evlerinizin salon çatılarında rahatlıkla kullanabileceğiniz bir sistemdir.

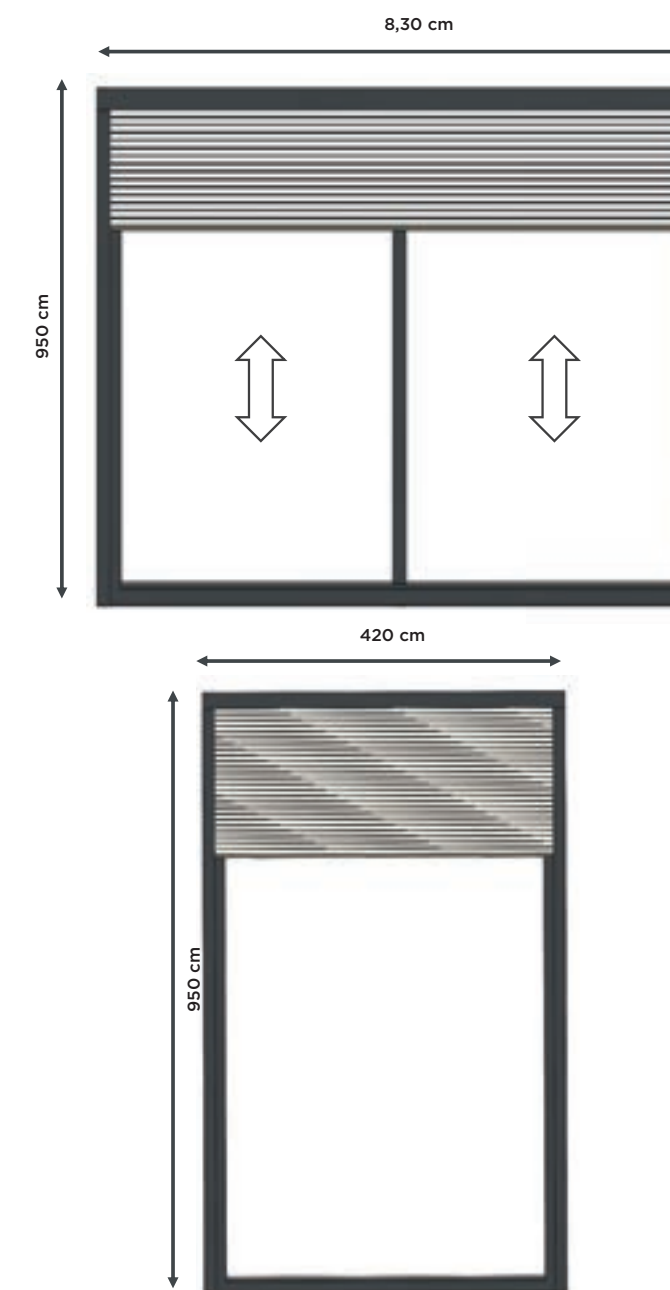
Bioclimatic automatic retractable ceiling systems are designed to be compatible with all spaces.

It is a system that you can easily use in your terraces, cafe restaurants, winter gardens, and even on the living room roofs of your detached houses, with the possibility of silent operation, heat and sound insulation, and 100% waterproof rate.





TECHNICAL
APPLICABLE MAXIMUM
DIMENSIONS



BİOKLİMATİK
PERGOLA SİSTEM
BIOCLIMATIC PERGOLA SYSTEM

*Four Seasons Comfortable
Living Spaces*



TECHNICAL

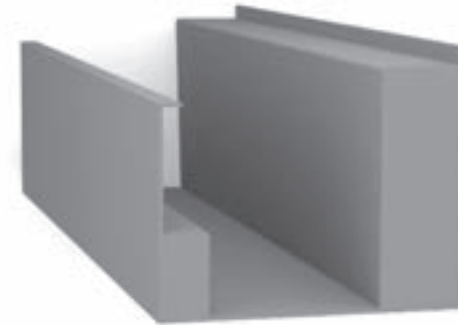
BIOCLIMATIC ALUMINUM PROFILES



Ayak Profili
Foot Profile



Ray Profili
Rail Profile



Oluk Profili
Groove Profile



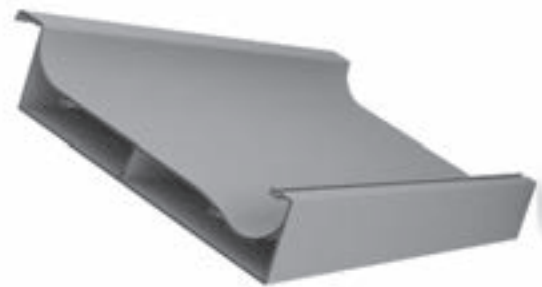
Oluk EK Profili
Groove Joint Profile



Küçük Oluk Profili
Small Groove Profile



Ray EK Profili
Rail Joint Profile



Lamel Profili
Lamella Profile



Küçük Ray Profili
Small Rail Profile



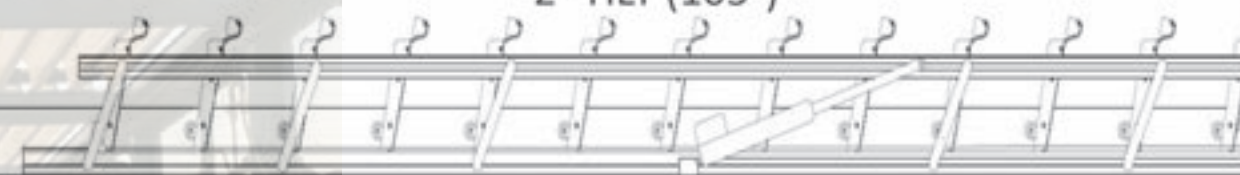


TECHNICAL LAMELLA SECTION

1- CLOSE



2- TILT (105°)



3- RETRACTABLE (105°)



- THE LOUVERS FIRSTLY TILT 105° BY TWO BOST SIDE MOTORS
- THE LOUVERS SECONDLY MOVE TO BACK BY MAIN MOTOR
- SYSTEM MY USE ONLY TILT TOO
- SYSTEM IS POSSIBLE TO INSTAL FLAT (0° SLOPY OR %5 SLOPY)
- MAXIMUM WIDTH 8,30 CM
- MAXIMUM PROJECTION 10 M
- IT HAS TO BE USE BEAM
- BIGGER THAN 4,20 CM WIDTH
- MAXIMUM 43 m²
- FOAM IS POSSIBLE TO INSERT IN LOUVER



*Büyüsüne kapılacağımız
essiz mekanlar...*

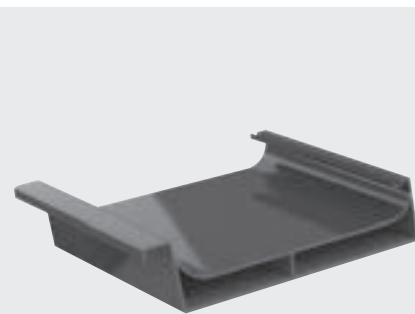
BİOKLİMATİK / BIOCLIMATIC

BIOCLIMATIC PERGOLA**TECHNICAL SPECIFICATIONS**

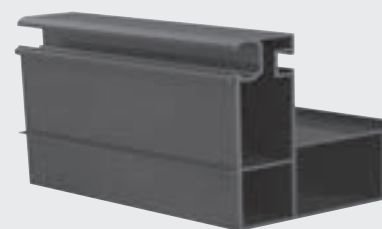
- 1) Sistemde kullanılan Alüminyum profiller, 6063 – T6 F25 (7580 Briner Sertlik) özelliktedir.
- 2) Bütün Profiller şantiyeye Elektro Statik fırın boyalı olarak ve ambalajlı gelir.
- 3) Bütün aksesuar galvaniz ve elektro statik fırın boya olarak ambalajlı gelir
- 4) Hareketli çatı örtüsü Alüminyum metaldir.
- 5) Paneller Eksenel çalışmaktadır ve istendiğinde geri toplanma hareket kabiliyetine haizdir. (Bu özellik havalandırma ile gölgelendirmeyi aynı anda yapabilmesi açısından önemlidir)
- 6) Paneller eksenel olarak minimum 105 derece açıda açılabilir. (Cepheden gelen güneş ışığını kesmek için önemlidir)
- 7) Oluk detayı Alüminyumdur ve dışarı taşmayacak şekilde tasarlanmıştır. Su taşıyıcı ayaklardan dışarı gider.
- 8) Tavan örtüsünün açılma-kapanma hareketi uzaktan kumanda kontrolü ile sağlanmalıdır.
- 9) Hatalı kullanımı önlemek için otomasyon sistemi ile entegre edilmiştir.
- 10) Bioklimatik sistem tüm mevsim şartlarına uygun olarak tasarlanıp, üretilmektedir.
- 11) Motor ile hareketli mekanizma arasında güç aktarımını triger kayışı sağlar ve ayarlanabilir.
- 12) Dikey taşıyıcı profiller 16 cm x 14 cm Alüminyumdur .
- 13) Flanş aplikasyon bağlantısı M12 gijon ve M12 krom kapalı somun ile yapılır.
- 14) Sistemde kullanılacak fitiller EPDM'dir.
- 15) Kullanılacak silikonlar, Nötral silikondur.
- 16) Bioklimatik sistem 2 (iki) yıl Motor ve 2 yıl mekanik garantisidir.
- 17) Yatay taşıyıcı profiller 12 cm x 18 cm' dem oluşur.
- 18) Sistem modülleri 50kg+25kg /m² yayılı yük ve 50kg/m² rüzgar yükünü karşılayacak statik özelliklere sahiptir.
- 19) Sistem modüllerinde kullanılan özel paneller sayesinde yağışlı havalarda havalandırmayı gerçekleştirecek şekilde dizayn edilmiş olup, kumanda ile kontrolde yağmur moduna sahiptir.
- 20) Sistemde bulunan alüminyum panellerin eksenel hareketi ayrı, geri toplanma hareketi ayrı motorlar ile sağlanır.
- 21) Sistem hem düz hemde eğimli bir şekilde çalışabilir.
- 22) Bioklimatik sistemlerde kullanılan tüm vida, civata, somun bağlantı aparatları İNOX paslanmaz Krom malzemedir.

- 1) Aluminum profiles used in the system are 6063 – T6 F25 (7580 Briner Hardness).
- 2) All Profiles come to the construction site as Electro Static oven painted and packaged.
- 3) All accessories come packaged as galvanized and electrostatic oven paint
- 4) Movable roof cover is Aluminum metal.
- 5) Panels work axially and have the ability to move back when requested. (This feature is It is important in terms of making ventilation and shading at the same time)
- 6) Panels should be able to be opened at a minimum angle of 105 degrees axially. (It is important to cut the sunlight coming from the facade)
- 7) Groove detail is Aluminum and does not protrude. The water goes out from the carrier feet.
- 8) The opening-closing movement of the ceiling cover should be provided by the remote control control
- 9) It should be integrated with the automation system to prevent misuse.
- 10) The system to be used is designed and produced in accordance with all seasonal conditions
- 11) The timing belt provides power transmission between the engine and the moving mechanism and is adjustable.
- 12) Vertical carrier profiles are 16 cm x 14 cm Aluminum.
- 13) Flange application screws are M8 * 80 Buldex or M8 * 80 Jacketed Steel dowel and galvanized coating. (In order not to damage the floor insulation)
- 14) The wicks to be used in the system are EPDM.
- 15) Silicones to be used are Neutral silicone.
- 16) Assembly teams are the company's own, paid, insured team.
- 17) The system to be used has 2 (two) years of engine and 2 years of mechanical warranty.
- 18) Horizontal carrier profiles consist of 12 cm x 18 cm.
- 19) System modules have static properties to meet 50kg+25kg /m² distributed load and 50kg/m² wind load.
- 20) Thanks to the special panels used in the system modules, it will perform the ventilation in rainy weather. It has been designed in such a way that it has rain mode in control by remote.
- 21) The axial movement of the aluminum panels in the system is provided by separate motors and the recoiling movement is provided by separate motors.
- 22) The system can work both straight and inclined





LAMELLA
280mm x 60mm



RAIL
180mm x 130mm

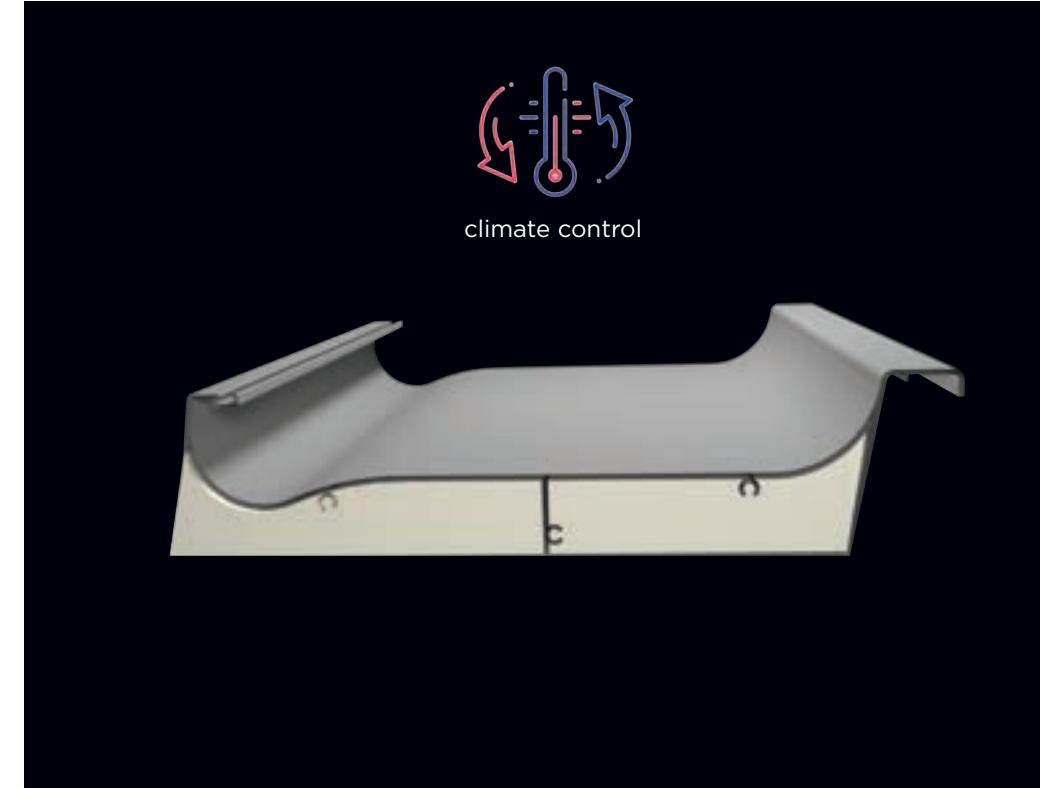


GUTTER
160mm x 140mm



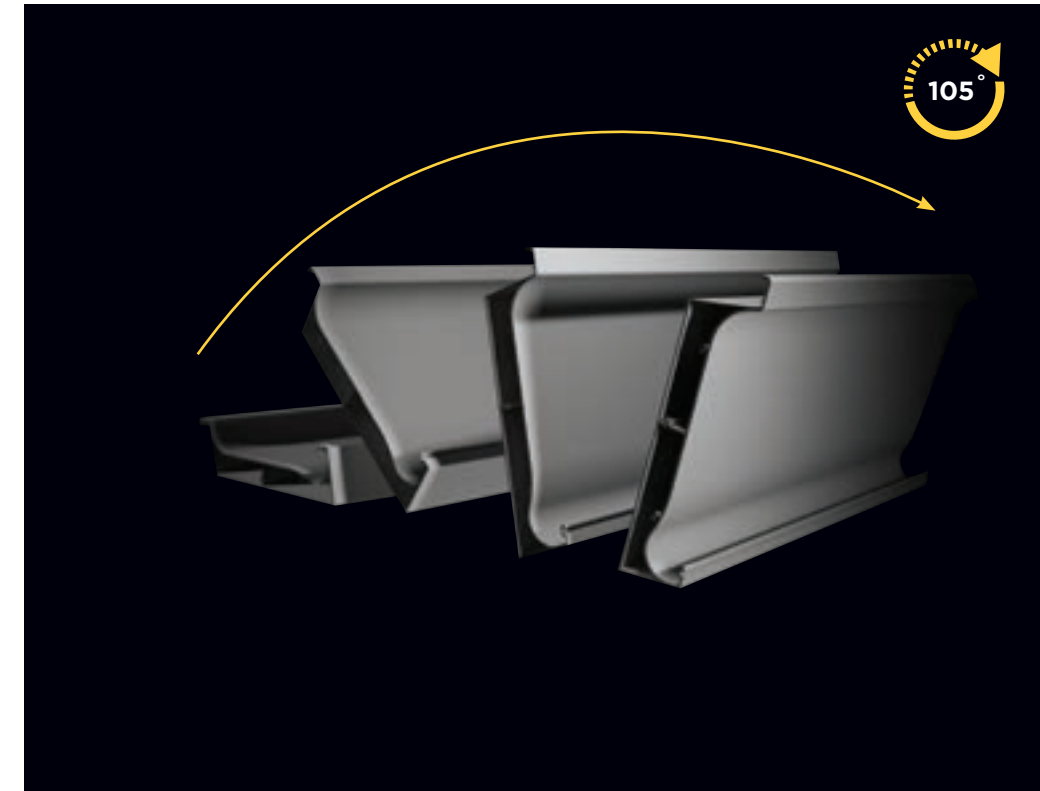
PILLAR
160mm x 140mm





Lamel profilinin içine opsiyonel olarak uygulanan poliüretan köpük dolgu ile ısı yalıtımı ve ses izolasyonu sağlanır.

Heat insulation and sound insulation are provided with optionally applied polyurethane foam filling inside the lamella profile.



Lamel profilleri 0° den 105° dereceye kadar kendi ekseninde dönebilir. İstenilen açıda uzaktan kumanda ile durdurulabilir, bu sayede mekan içerisinde hava sirkülasyonu sağlanarak daha konforlu kullanım sunar.

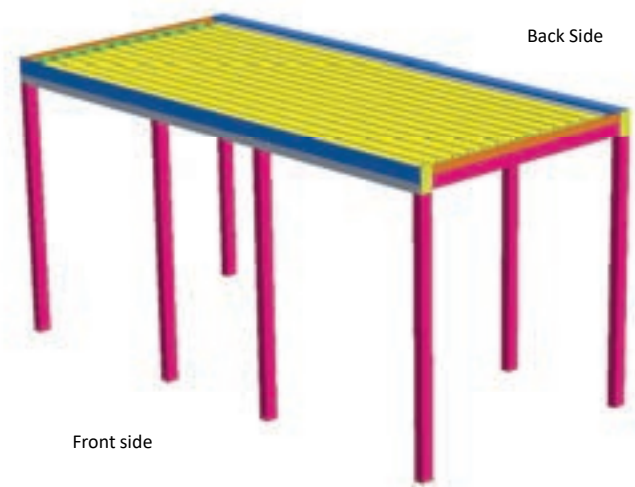
Lamel profiles can rotate on their own axis from 0° to 105° degrees. It can be stopped at the desired angle with the remote control, thus providing more comfortable use by providing air circulation in the space.

BİOKLİMATİK / BIOCLIMATIC

TEKNİK BAĞLANTI ŞEMALARI

BIOCLIMATIC TECHNICAL CONNECTION DIAGRAMS

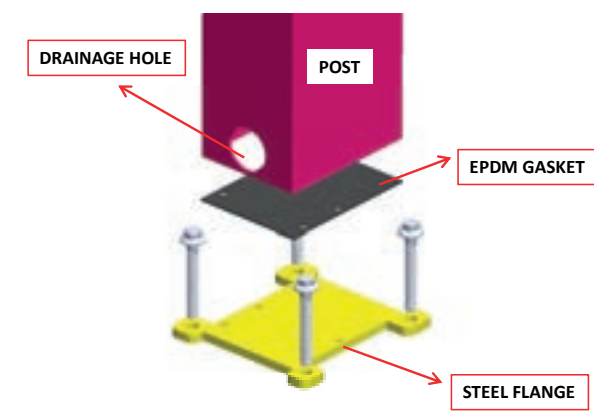
Bioclimatic İnstalation Detail



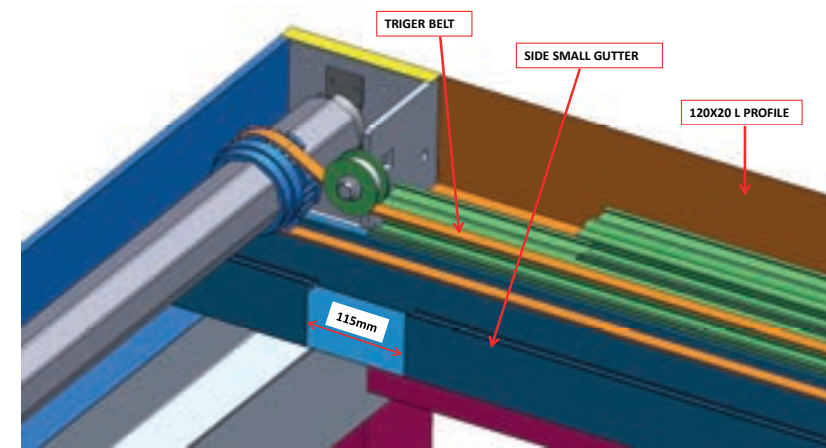
Back Side

Front side

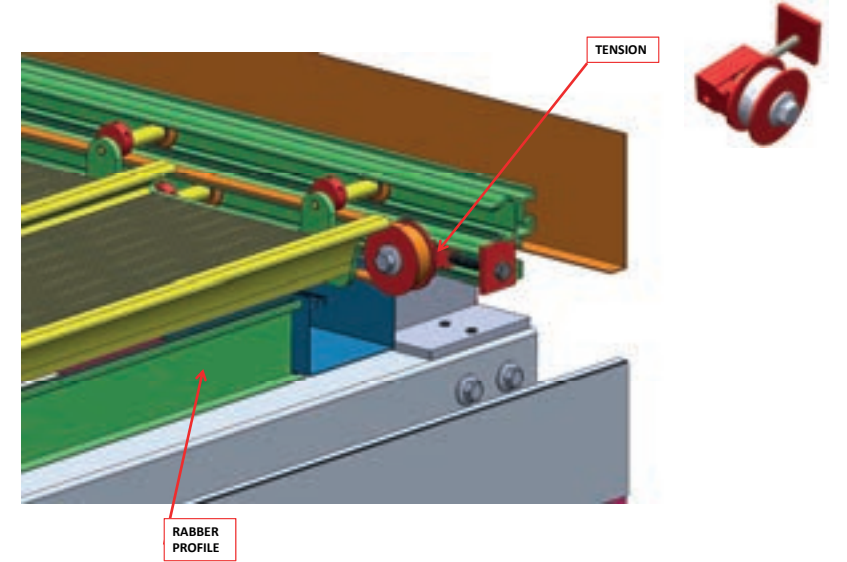
POST INSTALATION



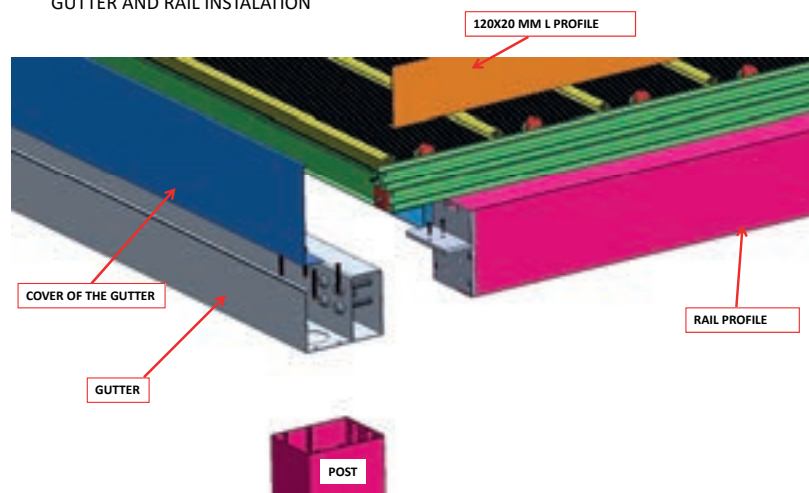
BACK AND SIDE SMALL GUTTER INSTALATION



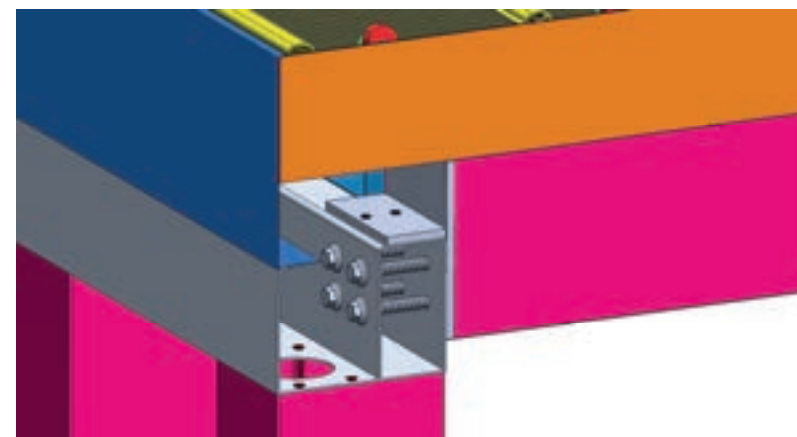
TENSION INSTALATION



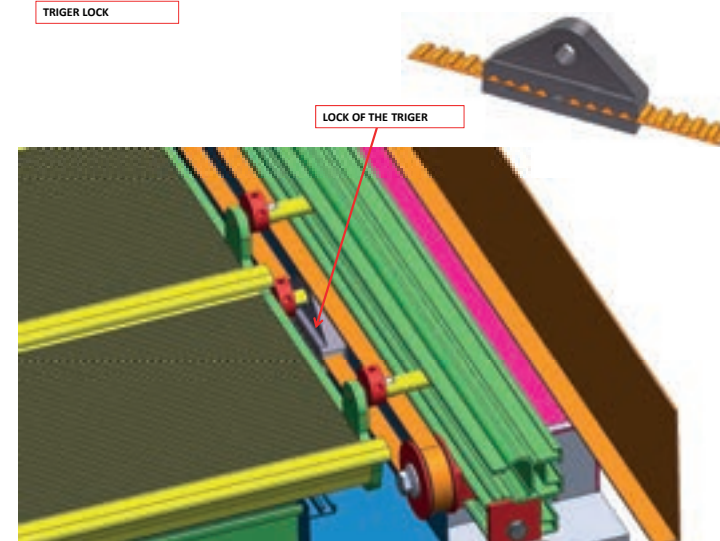
GUTTER AND RAIL INSTALATION



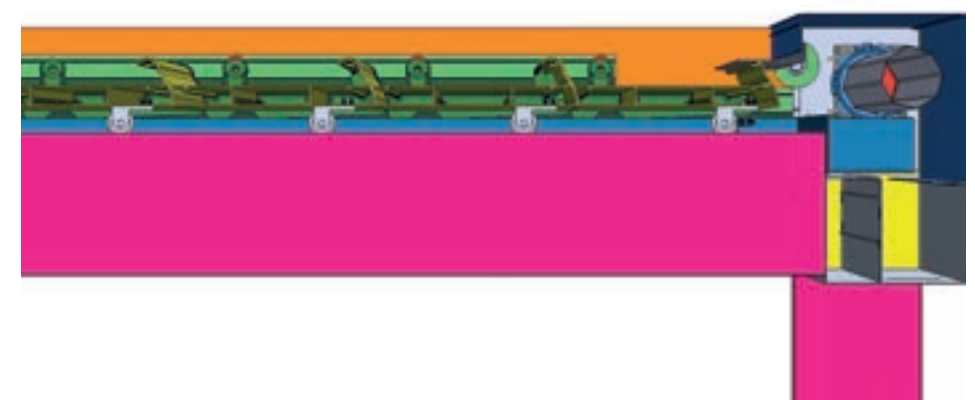
GUTTER AND RAIL INSTALATION



TRIGGER LOCK



LOUVER WHEEL IN THE MIDDLE
NOT: THIS WHEEL IS USING FOR WIDER THAN 400CM LOUVER





MOTORLU PERGOLA SİSTEMLERİ

MOTORIZED PERGOLA SYSTEMS

Motorlu Pergola Sistemleri alüminyum taşıyıcılar üzerine uyarlanmış uzaktan kumanda ile açılıp & kapanabilen bir sistemdir. Şık ve estetik görüntüsü ile her mekana ve her projeye uygun bir şekilde tasarlanmıştır.

Dört mevsime uygun tasarımı ile yaz aylarında güneşli havalarda, kış aylarında ise yağmurlu veya karlı havalarda mekanlarınızda rahatlıkla kullanılabilir. Tavan kısmındaki alüminyum profiller üzerinde olan led ışıklar ile mekanlarınızı aydınlayabilirsiniz.

Motorized Pergola Systems are a system that can be opened and closed with a remote control adapted on aluminum carriers. With its stylish and aesthetic appearance, it is designed to suit every space and every project.

With its four-season design, it can be used in sunny weather in summer and in rainy or snowy weather in winter. You can easily use it in your spaces. You can illuminate your spaces with the led lights on the aluminum profiles on the ceiling.



TECHNICAL

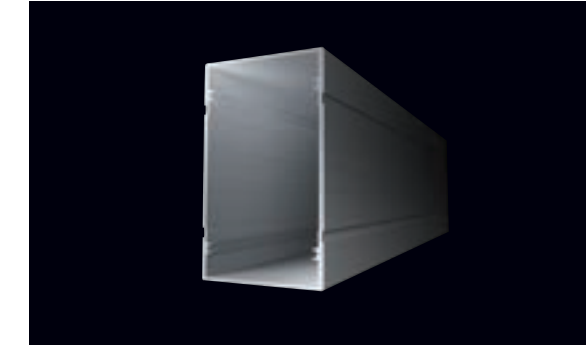
MOTORIZED PERGOLA ALUMINUM PROFILES



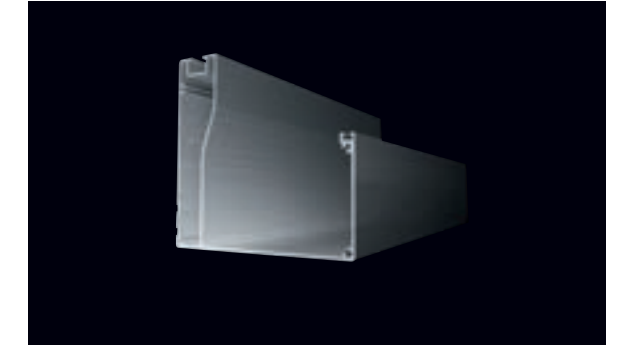
GOLD RAY PROFİLİ
Gold Ray Profile



SILVER RAY PROFİLİ
Silver Ray Profile



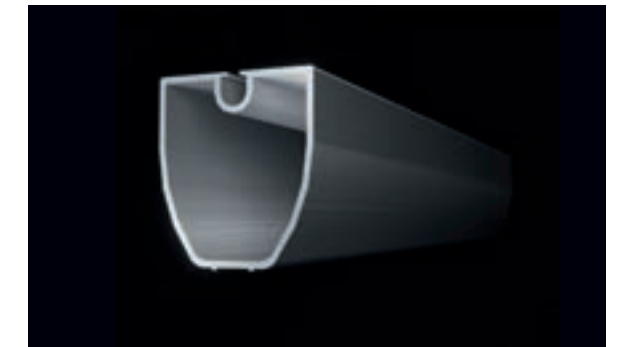
AYAK PROFİLİ
Foot Profile



OLUK PROFİLİ
Gutter Profile



KUMAŞ ALT PROFİLİ
Fabric Bottom Profile



KUMAŞ ALT PROFİLİ
Fabric Bottom Profile



MOTORIZED PERGOLA TECHNICAL SPECIFICATIONS

1- Pergola systems are manufactured at Idea Tente Guillotine Glass Systems facility in accordance with ISO9001 quality standards and the latest produced with technology. System design, aluminum construction and all accessories are our patented products.

2- The type of fabric used in our pergola products is PVC-based, 3-dimensional blackout membrane and imported SIOEN (Belgium) brand. Anti-bacterial walking roof cover is a blackout membrane weighing 850 gr/m² and has waterproof, non-combustible and non-flammable properties. Blackout membrane is covered with black film inside; It also provides heat insulation with its light-proof feature. It does not keep the heat in the summer and the cold in the winter. The fabric is guaranteed for 5 years.

3- The engine and automation components that run the pergola systems, all the components used in the specially designed engine block are our patented products. Motors are guaranteed for 5 years.

4- Pergola systems are a retractable roof cover (walking roof) system, consisting of horizontal axles, moving on vertical rails made entirely of aluminum parts.

5- Pergola systems are designed and produced in accordance with all weather conditions in 4 seasons.

6- Pergola systems are widely used as a winter garden, with their lateral parts closed with folding glass, sliding glass or aluminum joinery, and with its retractable roof feature.

7- There are no color restrictions on aluminum metal parts of pergola systems. It can be produced as electrostatic powder painted in all desired RAL colors, and all colors in the wood-like transformation processing chart can be obtained.

8- Pergola systems are resistant to 25 cm snow load and 70 km/h wind speed.

9- Stream profile specially designed for pergola systems; It ensures the controlled collection of the water spilled from the top cover, the water collected in the isolated environment thanks to the connection apparatus, proceeds to the ground through the strut profiles and is sent to the outside.

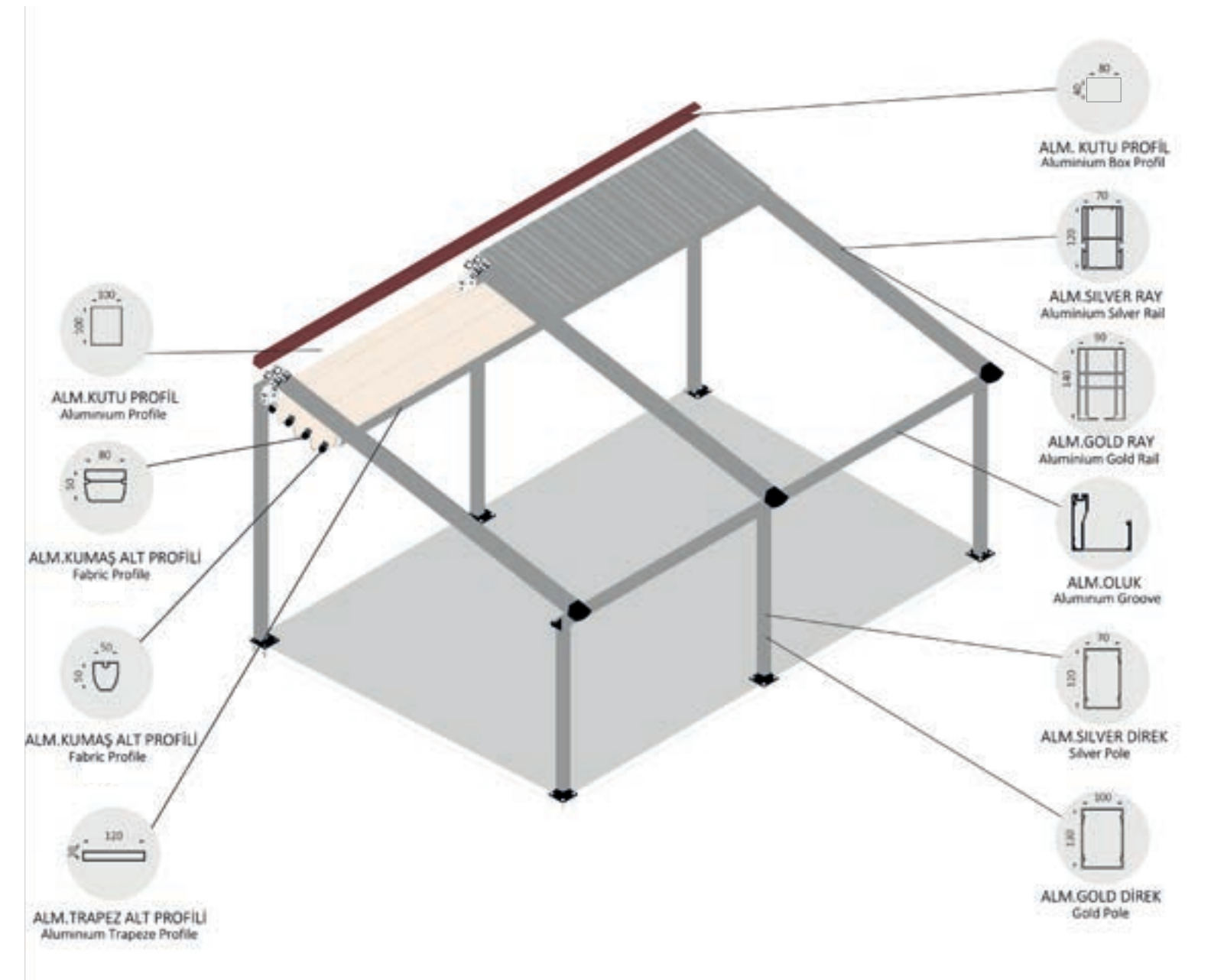
10- The walking roof rails of the pergola systems are special aluminum alloy extrusions, the interior is specially textured and includes the movement mechanism and walking axle wheels, no steel or wooden additional carrier is needed. It includes both the mechanism and acts as a carrier rail. It also has a stylish and aesthetic appearance with its designs.

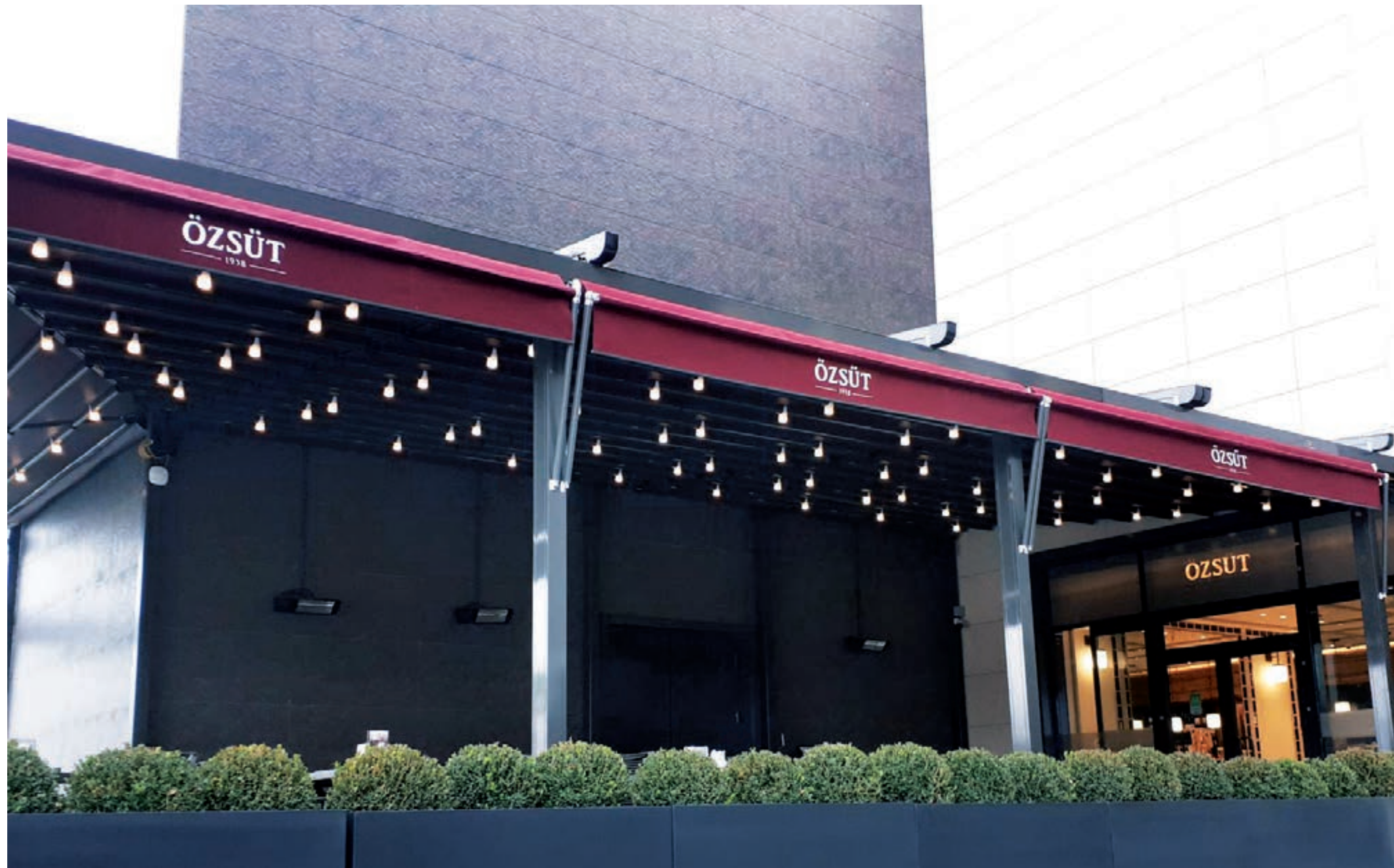
11- All connection parts and bolts of pergola systems are stainless INOX.



TECHNICAL

MOTORIZED PERGOLA ALUMINUM PROFILES





NEW SERIES PERGOLA LIGHT RAIL PERGOLA.

When you collect the fabric back with the specially designed lighted rail pergola, your spaces will be more eye-catching and bright with the led lighting on the rail...

MADE BY **IDEA**





GİYOTİN CAM / GUILLOTINE GLASS

MOTORLU GİYOTİN CAM SİSTEMLERİ

MOTORIZED GUILLOTINE GLASS SYSTEMS

Motorlu Giyotin Cam Sistemleri uzaktan kumanda ile yukarı aşağı hareket ederek açılıp kapanan bir sistemdir. 3 ayrı panelden oluşan bu sistemde, 2 panel hareketli, 1 panel sabit çalışır. En altta kalan sabit panel sistem tamamen açıldığında aynı zamanda bir korkuluk görevi görmektedir.

Giyotin Cam Sistemlerinde camlar 8 mm tekcam ve ısıcamlı temperli olarak istenilen renklerde kullanılabilir. Bu sistemler çok farklı mekanlarda kullanılabilir. Cafe, Restaurant, Otel, Kış bahçesi, Etkinlik Salonları vb. mekanlarda rahatlıkla kullanılabilir.

Motorized Guillotine Glass Systems is a system that opens and closes by moving up and down with a remote control. In this system, which consists of 3 separate panels, 2 panels are mobile and 1 panel works stationary. The fixed panel at the bottom also acts as a railing when the system is fully opened.

Guillotine Glass Systems, glasses can be used in desired colors as 8 mm single glass and double-glazed tempered. These systems can be used in many different places. Cafe, Restaurant, Hotel, Winter Garden, Event Halls etc. It can be used easily in places.

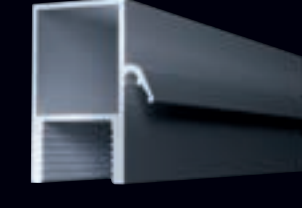


TECHNICAL

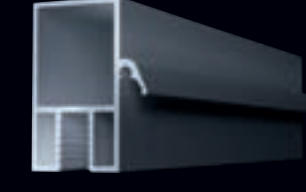
MOTORIZED GUILLOTINE ALUMINUM PROFILES



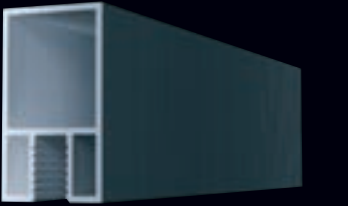
ISICAMLI SERİ PROFİL
Thermal Glass Series profile



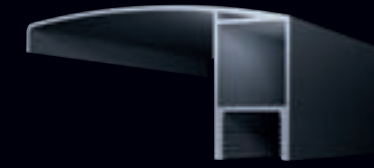
ISICAMLI SERİ ÇİTALI PROFİL
Thermal Glass Series Slatted Profile



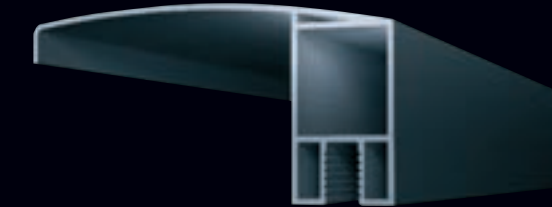
4500 SERİ ÇİTALI PROFİL
4500 Series Sheet Profile



4500 SERİ PROFİL
4500 Series Profile



4500 SERİ KORUMALI PROFİL
4500 Series Protected Profile



ISICAMLI SERİ KORUMALI PROFİL
Thermal Glass Series Protected Profile



RAY PROFİLİ
Rail Profile



MOTOR KAPAK ve ÖN GÖVDE
Engine Cover And Front Body



ALT ÜST KAPAMA PROFİLİ
Lower Top Closing Profile



RAY KAPAMA PROFİLİ
Rail Closing Profile

Certificates



ALUMINUM SYSTEMS

İDEA TENTE GİYOTİN CAM SİSTEMLERİ SAN. TİC. LTD. ŞTİ

Yeniçöl Mahallesi İzzet Uzun Filiz Sokak
No:75 Muratpaşa / ANTALYA

Tel: +90 242 252 00 08

idea@ideatente.com - www.ideatente.com

